

Intermediate Whitework Ornament

Stitch Count: 40H X 40W

The original model for this design was stitched over-two on 28-count tea dyed linen from Charles Craft®, using two strands DMC ecru floss, and Mill Hill beads: #00123 cream.

Use two strands of floss, unless indicated otherwise. Attach beads using one strand floss. Please complete stitching in the order listed.

Beginning in the center of the design:

1. Plaited cross stitch (over 4 threads).
2. Queen stitches (use one strand floss): Do the four immediately surrounding the central plaited cross stitch, rotating your work 90 degrees for each stitch.
3. Stitch the four diamond eyelets (over 8 threads) next.
4. Stitch the trios of the queen stitches located at both sides of all the diamond eyelets.
5. Do the three-sided stitch border. (Use one strand floss) This stitch is worked right to left, and each leg is stitched twice before moving on to the next leg. Again, rotate your work as you stitch each row.
6. Do double leviathan stitches in each corner of the next border.
7. Complete plait stitch rows between the double leviathan stitches. (Please note that in the diagram, there are small "compensating" stitches at the beginning and at the end of the row.)
8. Do satin stitch bars next (located at the ends of the knotted clusters rows).
9. Hemstitch at the top and bottom of each knotted cluster row (these rows are indicated by the greyed areas).
10. Very carefully, cut the 6 **horizontal** threads between the rows of hemstitching and satin stitch bars and remove

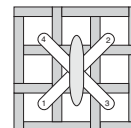
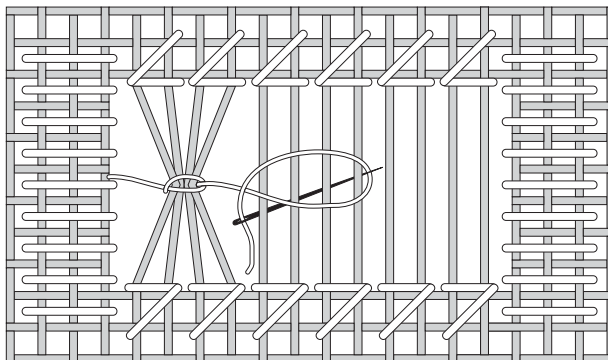
Intermed. Whitework Ornament

them. Do not cut the vertical threads!
11. Anchor a single strand of floss behind the satin stitch bar at the left end of a knotted cluster row, and referring to the diagram, catch the vertical threads in groups (clusters) of four across the row, anchoring the floss again at the end of the row behind the satin stitch bar. Repeat for the other three knotted cluster rows.

12. Complete the Rhodes stitches in all four corners of the design.

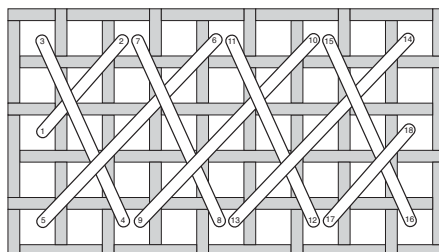
13. Stitch the outside border: plait stitch (over 2 threads) in the direction indicated by the arrows.

14. Attach beads (indicated by small circles).

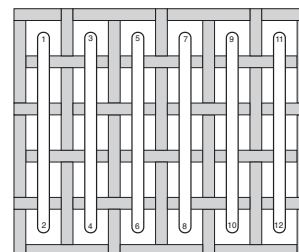


attaching a bead using a full cross stitch

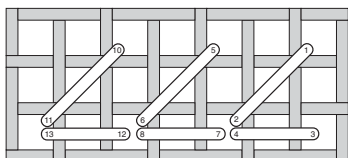
knotted clusters



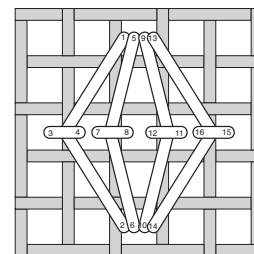
plait stitch (over 4 threads)



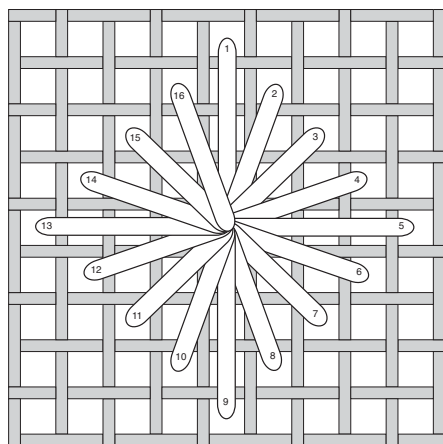
satin stitch (over 4 threads)



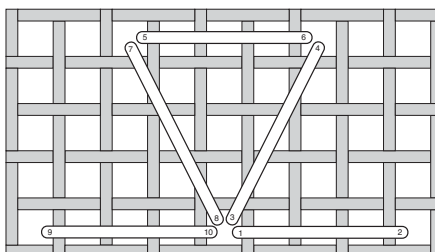
hem stitch (over 2 threads)



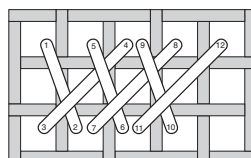
queen stitch (over 4 threads)



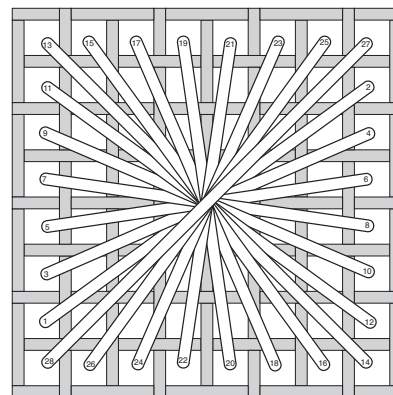
diamond eyelet (over 8 threads)



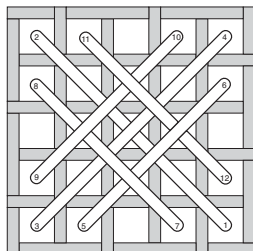
chain stitch



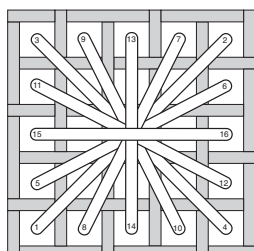
plait stitch (over 2 threads)



Rhodes stitch (over 7 threads)



plaited cross (over 4 threads)



double leviathan stitch

PLEASE NOTE!! This is a "free" chart, which means you may photocopy it. You may stitch it as many times as you'd like. Shopowners may give it to customers free of charge. However, since TW Designworks retains ownership of the copyright, **you may not sell this chart, or profit from it in any way!** On behalf of needlework designers, I thank you for your support of copyright law! Enjoy! -Teresa Wentzler