

Beginner Whitework Ornament

Stitch Count: 42H X 42W

The original model for this design was stitched over-two on 28-count tea dyed Monaco fabric from Charles Craft®, using two strands DMC ecru floss, and Mill Hill beads: #00123 cream.

This piece was designed to introduce students to beginner-level whitework stitches. **Enjoy!**

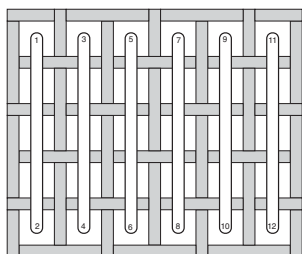
Use two strands of floss throughout the design. Attach beads using one strand floss. The stitches do not need to be completed in any specific order: the following is a suggested order which identifies the chart diagrams:

Beginning in the center of the design:

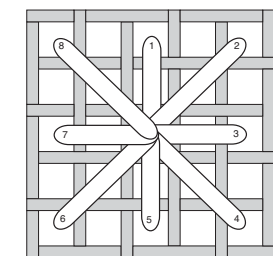
1. Square eyelet (over 6 threads)
2. Satin stitch bars surrounding the centraleylet.
3. Rice stitches at corners of satin stitch bars.
4. Lazy daisy clusters next to satin stitch bars.
5. A row of diagonally placed Algerian eyelets surrounds the central motif area.
6. More satin stitch bars centrally located at each of the four sides of the design.
7. Diagonal satin stitch "flower" motifs at each side of all the satin stitch bars from step 6.
8. Rows of alternating Smyrna cross stitches (heavier lines) and Algerian eyelets are located diagonally from the corners of the design inward toward the center.

Beginner Whitework Ornament

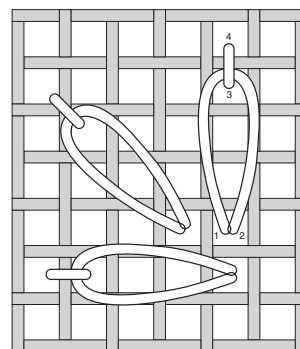
9. Inner chain stitch border. (Note: begin stitching each row at the center!)
10. Diagonal satin stitch flower motifs in each of the four corners of the design.
11. Satin stitch bars.
12. Diamond eyelets (over 4 threads) in the middle of each side of the design.
13. Algerian eyelet trios in the remaining spaces between the satin stitch bars.
14. Outer chain stitch border around the outside edge of the entire design.
15. Attach beads where small circles appear throughout the design.



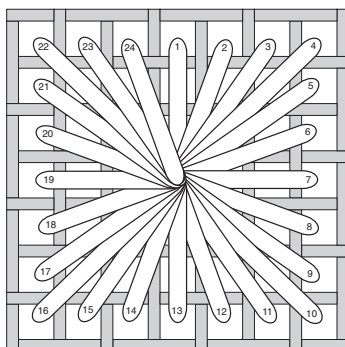
satin stitch (over 4 threads)



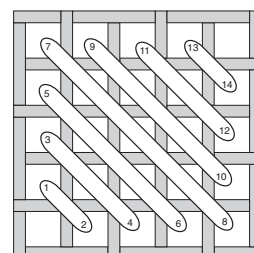
Algerian eyelet (over 4 threads)



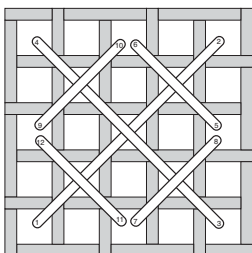
lazy daisy



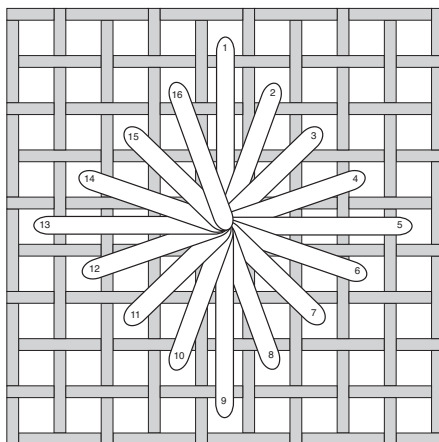
square eyelet (over 6 threads)



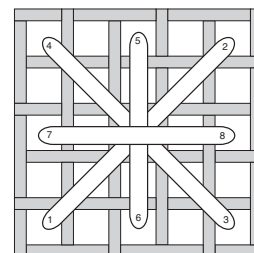
diagonal satin stitch



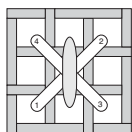
rice stitch (over 4 threads)



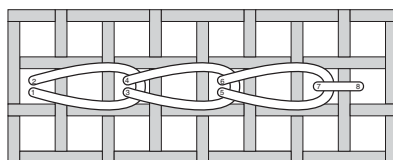
diamond eyelet (over 8 threads)



Smyrna cross (over 4 threads)



attaching a bead using
a full cross stitch



chain stitch

PLEASE NOTE!!

This is a "free" chart, which means you may photocopy it. You may stitch it as many times as you'd like. Shopowners may give it to customers free of charge. However, since TW Designworks retains ownership of the copyright, **you may not sell this chart, or profit from it in any way!** On behalf of needlework designers, I thank you for your support of copyright law!

Enjoy!

-Teresa Wentzler